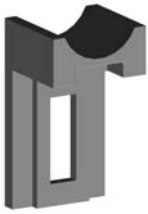


## Balances For Aluminium Double Hung Windows

Doric Products have been producing balancing mechanisms to suit both aluminium & timber windows for more than 15 years. During that time testing has lead to continuous refinement of both materials used in the system and the efficiency of the operation. The unique 'auto-compensating' mechanism gives the user a near maintenance free window operating system - truely unique in double hung windows.

The Doric aluminium window spring balance system is essentially a universal mechanism with tailored accessories to suit individual window suites.

### Sash Guides



**DB0140** Sash Guide  
Engineered Plastic



**DB0214** Sash Guide  
Engineered Plastic



**DB0215** Sash Guide  
Engineered Plastic

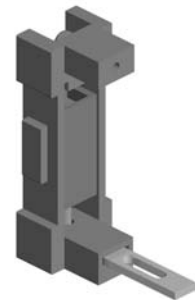
### Friction Foot



**DB0708** Friction Foot



**DB0672** Friction Foot



**DB0716** Heavy Duty Friction Foot

**Note:** The above products are only a few of the many sash guides and friction feet for aluminium suites. If you require to see the range please contact a Doric representative.

## Balances For Timber Double Hung Windows

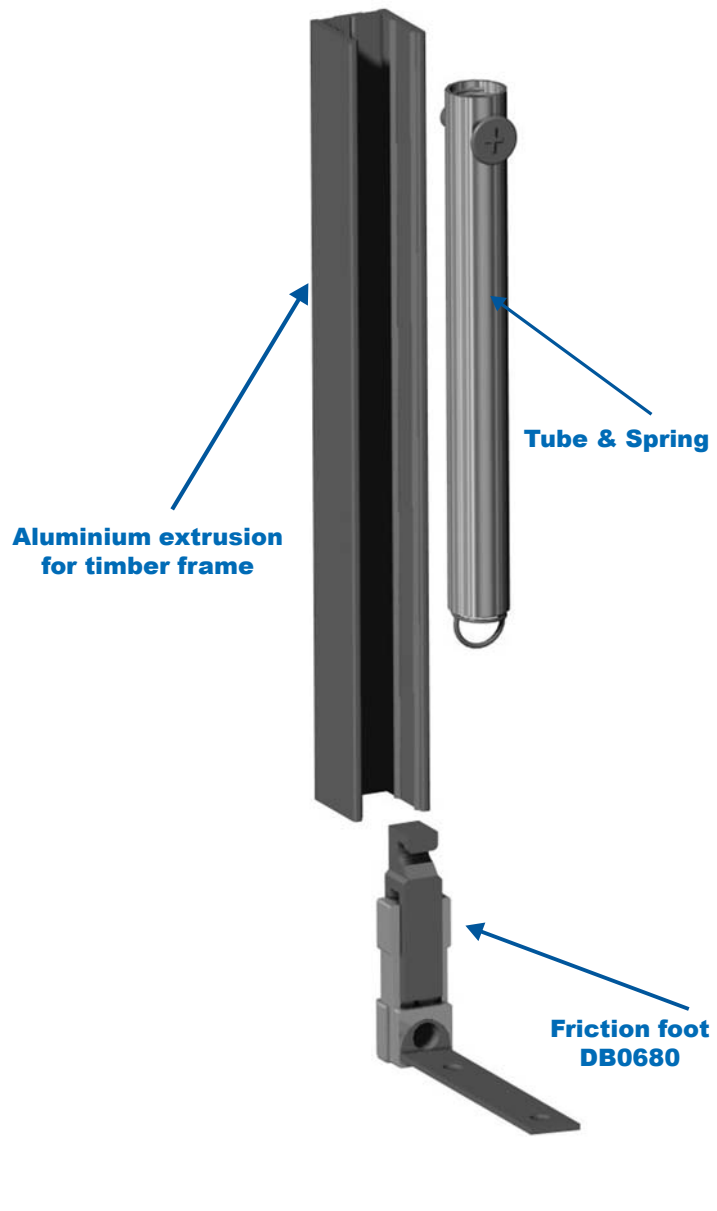
The Doric Products spring balance system for timber windows has long been recognized as the best performing mechanism available. Recent upgrades to the timber system have seen the incorporation of the 'auto-compensating' mechanism and converting the feet fixing plates to stainless steel. Once correctly installed the latest timber window balance system will impart a quality of operation previously thought impossible in timber windows.

The Doric timber window spring balance system is essentially a universal mechanism with tailored accessories to suit individual window suites.

**Spring Balance System Mounted on Timber**










**Exploded View of Spring Balance System**



**DB0680 Timber Balance Friction Foot**  
Suits 13mm Channel

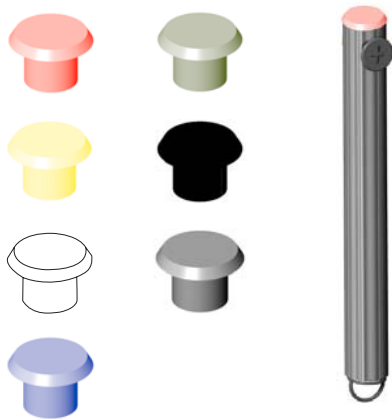
## Colour Codes for Spring Balances

Specific colour coding of the spring balances applies to the sash weight carrying capacity of the system.

	= 0 - 2.75kg		= 10.00 - 14.00kg
	= 2.75 - 4.25kg		= 14.00 - 18.00kg
	= 4.25 - 6.00kg		= 14.00 - 18.00kg
	= 6.00 - 10.00kg		

**Spring Balance Codes**

### Colour Coded Caps for Tubes



### Colour Coded Springs



## Branches

### Head Office

46-48 Redfern St,  
Wetherill Park, NSW 2164  
Ph: (02) 9609 2555  
Fax: (02) 9604 2910

### Newcastle

Unit 1a/87 Munibung Rd,  
Cardiff, NSW 2258  
Ph: (02) 4956 8508  
Fax: (02) 4956 8495

### Victoria

Unit B, 1 Macbeth St,  
Braeside, Vic 3195  
Ph: (03) 9587 3195  
Fax: (03) 9587 3196

### South Australia

Unit 7/4 Deacon Ave  
Richmond, SA 5033  
Ph: (08) 8443 3370  
Fax: (08) 8443 3066

### Western Australia

Unit 2/23 Gibberd St,  
Balcatta, WA 6021  
Ph: (08) 9240 5200  
Fax: (08) 9240 2404

### Queensland

Unit 3/94 Delta St,  
Geebung, QLD 4034  
Ph: (07) 3865 7637  
Fax: (07) 3865 7645

### New Zealand

4 Andromeda Crescent,  
East Tamaki, Auckland NZ  
Ph: (64) 9273 6515  
Fax: (64) 9274 4453

### Doric Products Asia Pacific

25, Jalan Gangsa SD5/3G  
Baru Sri Damansara, KL 52200  
Ph: (603) 632 6799  
Fax: (603) 634 6429

**Internet:** [www.doric.com.au](http://www.doric.com.au)

**Email:** [customer\\_service@doric.com.au](mailto:customer_service@doric.com.au)